

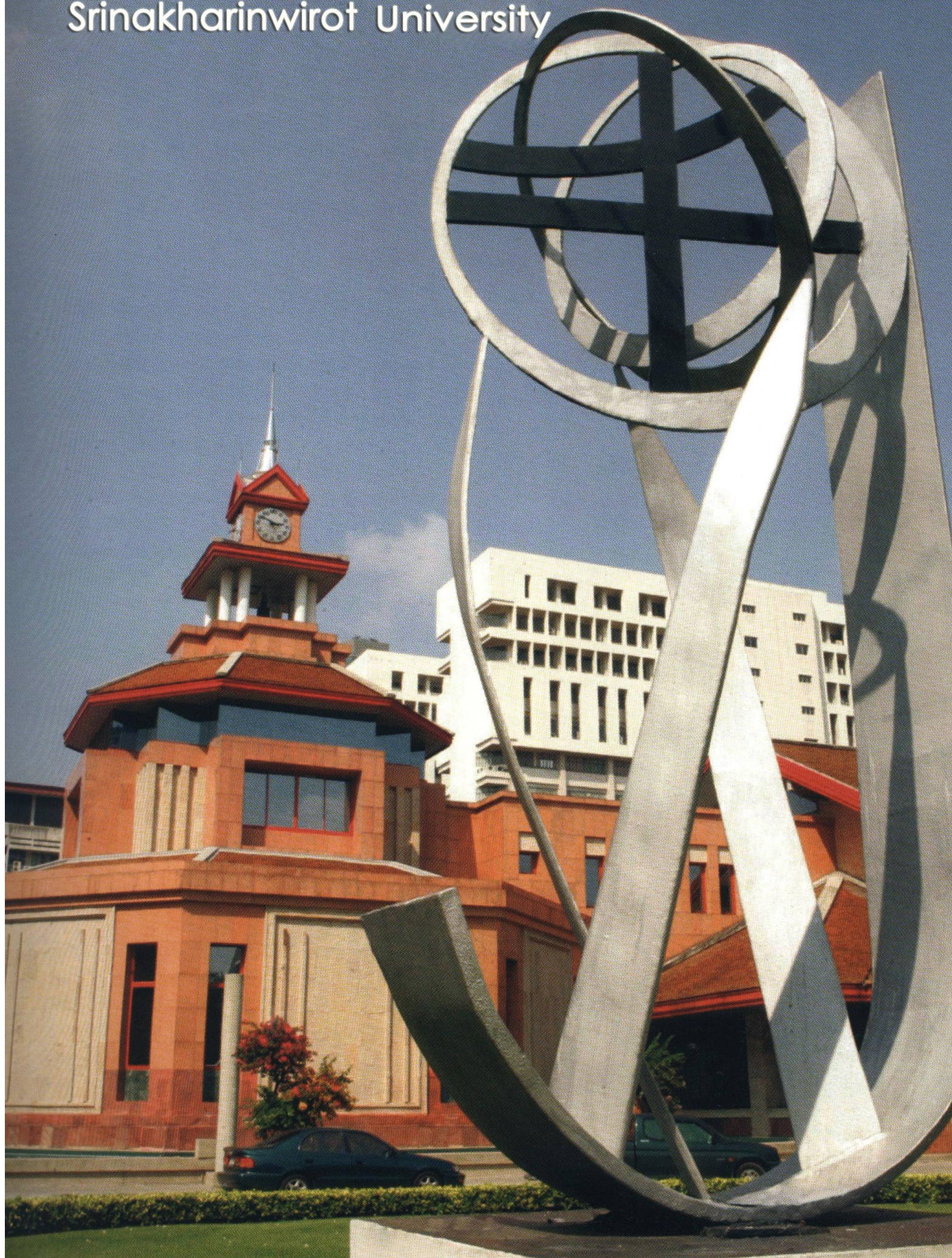


# Faculty of Nursing Srinakharinwirot University





# Srinakharinwirot University





A scenic view of a university campus. The foreground is a paved path covered with fallen pink cherry blossom petals. A black metal bench with a wooden seat sits on the path. In the background, there are large, mature trees with dense green foliage and some pink blossoms. The sky is bright and slightly overcast.

Education is Growth

Srinakharinwirot University



## Introduction of the Srinakharinwirot University

### Philosophy

“Education is growth” is the equivalent of Balinese “Sikkha Wirun Sum Patta”.

(สิกขา วิรุฬหิ สม ปต ตา)

### Vision

Srinakharinwirot University is one of the leading research and learning organizations on a basis of virtue and education oriented to international innovation and creativity.

### Mission

1. To generate personnel development with quality and virtue for society through the learning process and a learning society.
2. To create quality, beneficial and sustainable research and innovation for national and international society.
3. To provide services with quality, awareness, and accountability for society.
4. To study, analyze and foster arts and culture.
5. To develop administration systems with quality and good governance.

### University Emblem



Srinakharinwirot University’s Emblem symbolizes an exponential curve:  $Y = e^x$  that signifies growth, which is our educational philosophy.

### SWU color: Grey and Red



The university’s colors are gray and red. Gray signifies that all thoughts and actions should be mindful while red is the color of bravery and determination. Therefore, the gray and red colors of the university denote “thinking and courage.”



คณะพยาบาลศาสตร์

คณะพยาบาลศาสตร์

FACULTY OF NURSING



Faculty of Nursing , Srinakharinwirot University





## *Introduction of the Srinakharinwirot University*

### **Program Philosophy**

Producing nurses with knowledge, morality and public mind.

### **Educational Philosophy**

Education is growth

### **Vision**

Faculty of Nursing, SWU, is the international nursing producing institute that create innovation for society based on Thai culture.

### **Mission**

1. To produce all levels of nursing graduates with knowledge to serve health service cover international professional standard
2. To create national and international quality research and innovation from knowledge to practical utility cover teaching, learning, and social's needs
3. To provide academic health services to strengthen the profession and community
4. To provide academic health services to strengthen the profession and community
5. To promote knowledge and understanding in value, gratitude and proud of community and national culture

# *Faculty of Nursing*

## *Srinakharinwirot University*

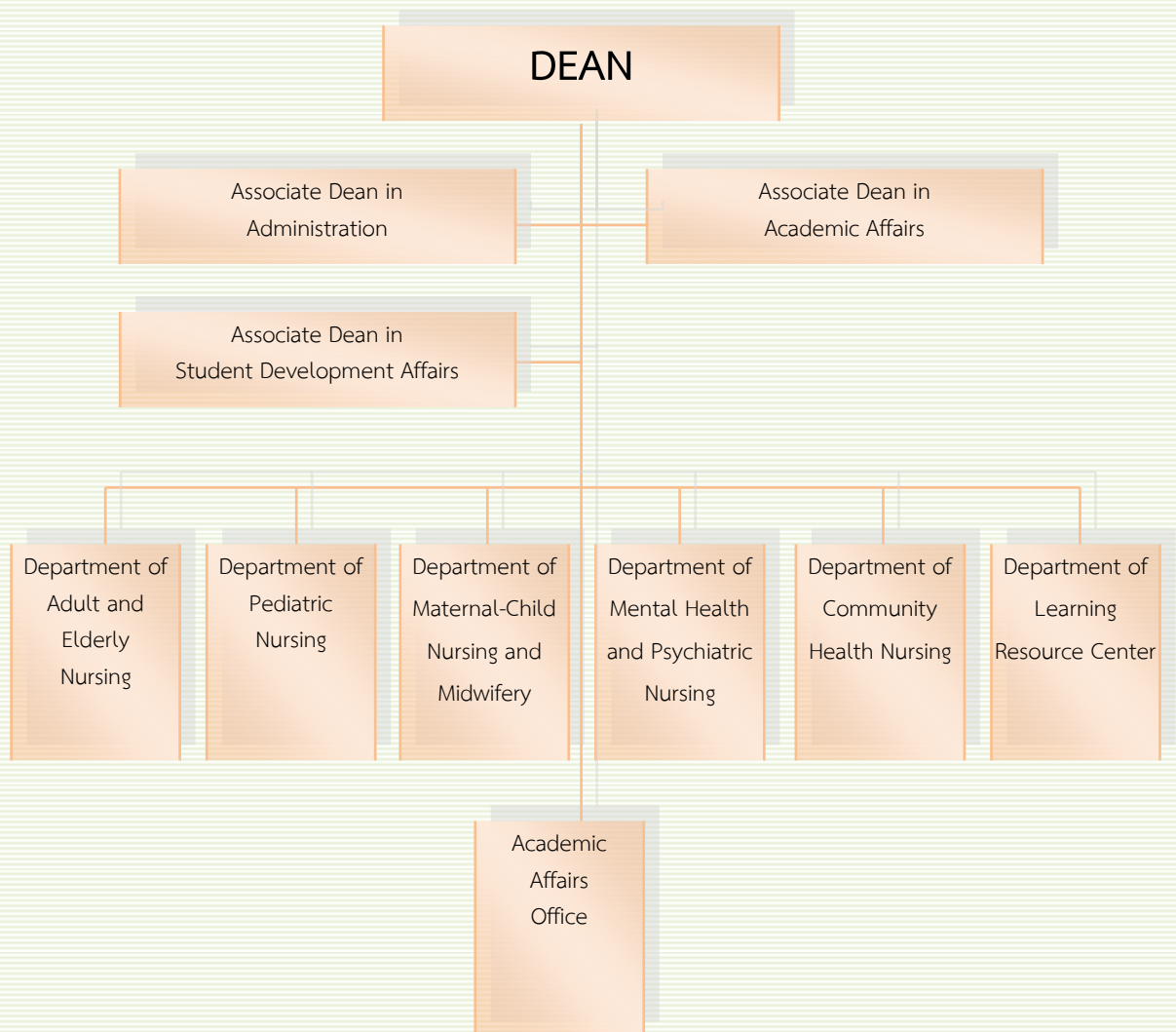


The Faculty includes seven departments and two offices : Adult Nursing, Pediatric Nursing, Maternal-child Nursing and Midwifery, Community Health Nursing, Mental Health and Psychiatric Nursing and Learning Resource Center. The program of study is a four-year general nursing education program leading to a Bachelor of Nursing Science. There are approximately 120 students enrolled in each year. They are selected by means of a quota and a national entrance examination.

The Faculty plans to start the bilingual language nursing four year program with 20 students per year, plus 15 students of Master degree of Nursing in Primary Medical Care & Community Health Nursing in 2020.



## Organization





## Academic Programs

### BACHELOR OF NURSING SCIENCE :

#### Duration of Study

The duration of study for this program is 4 years, which composes of 8 regular semesters and 2 summer semesters. Total credit for the 4-year Bachelor's degree is 139 credits.

#### Component of the curriculum

1. General Education Courses	30	credits
2. Professional Education Courses	103	credits
1) Pre Professional	20	credits
2) Professional	83	credits
3. Elective Courses	6	credits

#### Subject

<b>1. General Education Courses</b>	<b>30 credits</b>
<b>1.1 Foreign language</b>	<b>10 credits</b>
To be chosen from the followings	
SWU111 Thai for Communication	3(3-0-6)
SWU121 English for Effective Communication I	3(2-2-5)
SWU122 English for Effective Communication II	3(2-2-5)
SWU123 English for International Communication I	3(2-2-5)
SWU124 English for International Communication II	3(2-2-5)
<b>1.2 Integrated Courses (Science, Mathematics, Technology)</b>	<b>3 credits</b>
SWU141 Life in a Digital World	3(3-0-6)
<b>1.3 Integrated Courses (Humanities and Social Sciences)</b>	<b>8 credits</b>
SWU151 General Education for Human Development	3(3-0-6)
SWU161 Human in Learning Society	2(2-0-4)
SWU261 Active Citizens	3(3-0-6)

#### Subject

<b>1.4 Integrated Courses (Science, Mathematics, Technology)</b>	<b>3 credits</b>
SWU241 Digital Technology and Society Trends	2(1-2-3)
SWU242 Mathematics in Daily Life	3(3-0-6)
SWU243 Personal Financial Management	3(3-0-6)
SWU244 Science for Better Life and Environment	3(3-0-6)
SWU245 Science, Technology and Society	2(2-0-4)
SWU246 Healthy Lifestyle	2(2-0-4)
SWU247 Food for Life	2(1-2-3)
SWU248 Alternative Energy	2(2-0-4)
SWU341 Business in a Digital World	2(1-2-3)
<b>1.5 Integrated Courses (Humanities and Social Sciences)</b>	<b>5 credits</b>
<b>1.6 Health Education Courses: 2 credits from the following courses</b>	
SWU131 Social Dance	1(0-2-1)
SWU132 Personal Fitness	1(0-2-1)
SWU133 Jogging for Health	1(0-2-1)
SWU134 Yoga	1(0-2-1)
SWU135 Swimming	1(0-2-1)
SWU136 Badminton	1(0-2-1)
SWU137 Tennis	1(0-2-1)
SWU138 Golf	1(0-2-1)
SWU139 Weight Training	1(0-2-1)



## Academic Programs

### Subject

### Subject

#### 2. Professional Education Courses

101 credits

##### 1) Pre Professional

20 credits

PX100	General Anatomy	3(2-2-5)
BC203	Biochemistry for Nurses	3(3-0-6)
PS205	Pathophysiology for Nurses	2(2-0-4)
PS224	Physiology for Nurses	3(2-3-4)
MB225	Clinical Microbiology and Parasitology for Nurses	3(2-3-4)
PM203	Pharmacology for Nurses	3(3-0-6)
NPS271	Psychology and Bio-Psychosocial Development	3(3-0-6)

##### 2) Professional

83 credits

NID101	Theoretical Nursing and Nursing Process	2(2-0-4)
NID102	English and Medical Terms	1(1-0-2)
NID203	Health Assessment	2(1-2-3)
NID204	Fundamental Nursing	3(2-2-5)
NID205	Laws and Ethics in Nursing Profession	1(1-0-2)
NID206	Health Promotion	2(1-2-3)
NID308	Emergency, Disaster and Resuscitated Nursing	2(2-0-4)
NID309	Research in Nursing	2(1-2-3)
NID310	Nursing Administration and Trends in Nursing Profession	2(1-2-3)
NPD251	Child and Adolescent Nursing 1	2(1-2-3)
NPD352	Child and Adolescent Nursing 2	2(1-2-3)
NAD231	Adult Nursing I	3(3-0-6)
NAD332	Elderly Nursing	3(3-0-6)
NAD334	Adult Nursing II	3(3-0-6)
NCN261	Community Health Nursing I	2(2-0-4)
NCN362	Community Health Nursing II	2(2-0-4)
NCN463	Primary Medical Care	2(2-0-4)
NOB341	Maternal Newborn Nursing and Midwifery I	3(3-0-6)
NOB343	Maternal Newborn Nursing and Midwifery II	3(3-0-6)
NPS472	Mental Health and Psychiatric Nursing	3(3-0-6)

NID207	Fundamental Nursing Practicum	3(0-9-0)
NAD333	Adult and Elderly Nursing Practicum I	4(0-12-0)
NAD335	Adult and Elderly Nursing Practicum II	4(0-12-0)
NOB342	Maternal Newborn Nursing and Midwifery Practicum I	4(0-12-0)
NPD353	Child and Adolescent Nursing Practicum	4(0-12-0)
NOB444	Maternal Newborn Nursing and Midwifery Practicum II	4(0-12-0)
NCN464	Community Health Nursing Practicum	4(0-12-0)
NCN465	Primary Medical Care Practicum	3(0-9-0)
NPS473	Mental Health and Psychiatric Nursing Practicum	3(0-9-0)
NID413	Administrative Nursing Practicum and Professional Experience	3(0-9-0)

**Elective Courses:** 2 credits from the following courses

NID111	Tobacco and Health	2(1-2-3)
NID312	Nursing Informatics	2(1-2-3)
NCN366	Community Health Development	2(1-2-3)

#### 3. Elective Courses

6 credits





*Photograph Gallery of Faculty of Nursing Events*





Photograph Gallery of Faculty of Nursing Events







*Tourist Attraction*





## Faculty of Nursing Srinakharinwirot University

Address : 63 M.7 Rangsit-Nakhonnayok, Nakhonnayok 26120, Thailand

Tel (662) 649-5000 ext. 1800, Fax (662) 6495000 ext. 1823

E-mail : [nurse@swu.ac.th](mailto:nurse@swu.ac.th) <http://nurse.swu.ac.th>

